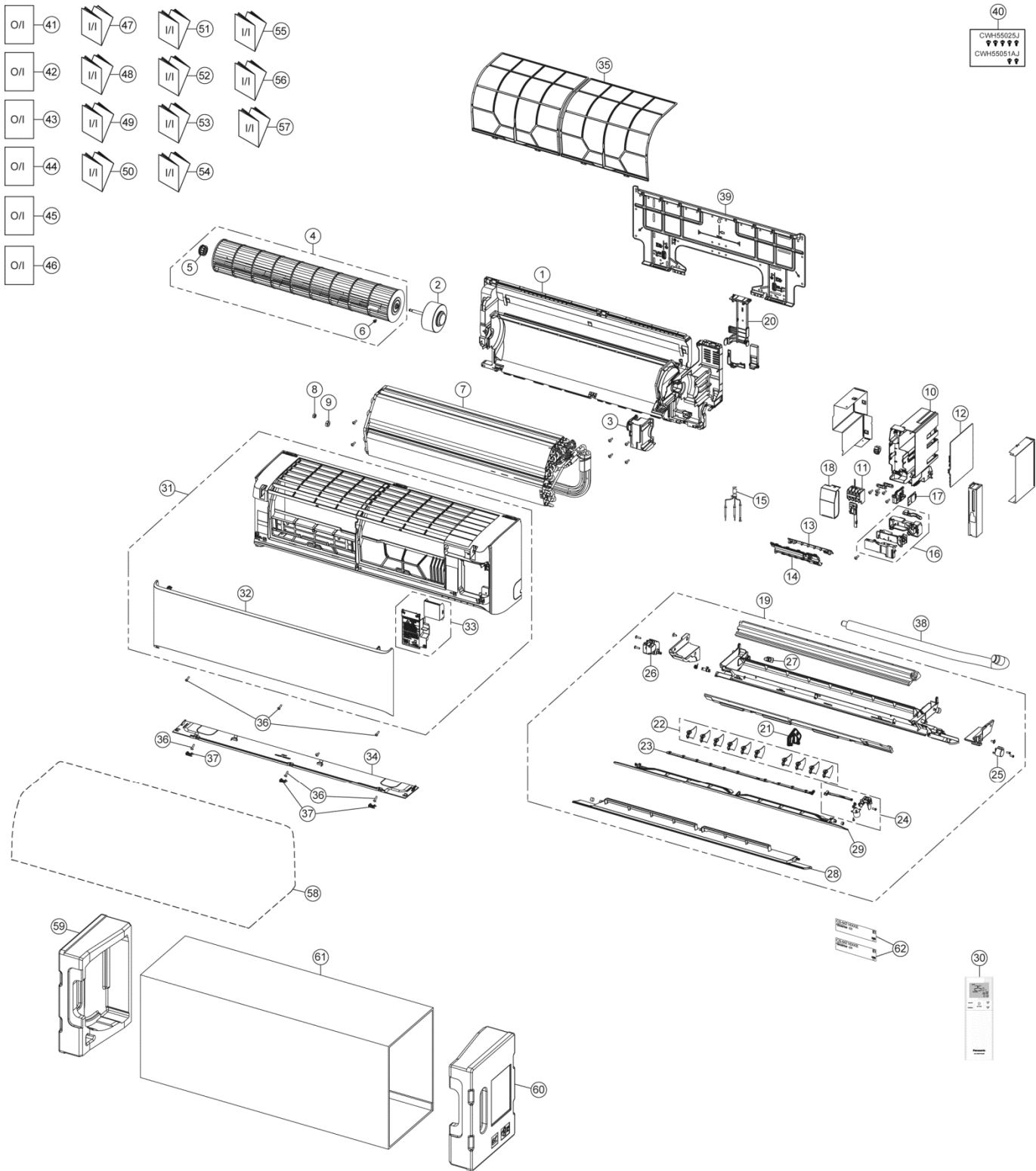


15. Exploded View and Replacement Parts List

15.1 Indoor Unit



Note
 The above exploded view is for the purpose of parts disassembly and replacement.
 The non-numbered parts are not kept as standard service parts.

SAFETY	REF. NO.	PART NAME & DESCRIPTION	QTY.	CS-MZ16XKE	REMARK
	1	CHASSIS COMPLETE	1	ACXD50C04160	
⚠	2	FAN MOTOR	1	L6CBYYL0306	○
	3	FAN MOTOR BRACKET	1	ACXD54-04360	
	4	CROSS-FLOW FAN COMPLETE	1	ACXH02C01330	
	5	BEARING ASSY	1	CWH64K1006	○
	6	SCREW - CROSS-FLOW FAN	1	CWH551146	
	7	EVAPORATOR	1	ACXB30C32540	
	8	FLARE NUT (LIQUID)	1	CWT251048	
	9	FLARE NUT (GAS)	1	CWT251049	
	10	CONTROL BOARD CASING	1	ACXH10-08620	
⚠	11	TERMINAL BOARD COMPLETE	1	ACXA28C05870	○
⚠	12	ELECTRONIC CONTROLLER - MAIN	1	ACXA73C72500	○
⚠	13	ELECTRONIC CONTROLLER-INDICATOR	1	ACXA73-37110	○
	14	INDICATOR HOLDER	1	ACXD93-22430	
⚠	15	SENSOR COMPLETE	1	CWA50C2664	○
⚠	16	GENERATOR COMPLETE	1	ACXH94C01420	
	17	ELECTRONIC CONTROLLER-DEVICE	1	ACXA73-28520	○
	18	CONTROL BOARD COVER-COMplete	1	ACXH13-08680	
	19	DISCHARGE GRILLE COMPLETE	1	ACXE20C06080	
	20	BACK COVER CHASSIS	1	ACXD93-22420	
	21	FULCRUM	1	ACXH62-00790	
	22	VERTICAL VANE	10	ACXE24-04000	
	23	CONNECTING BAR	1	ACXE26-02550	
⚠	24	AIR SWING MOTOR (VERTICAL)	1	ACXA98K00220	○
⚠	25	AIR SWING MOTOR (HORIZONTAL UPPER)	1	ACXA98-02420	○
⚠	26	GEAR-COMplete (ASM HORIZONTAL LOWER)	1	ACXH68C00520	○
	27	CAP - DRAIN TRAY	1	CWH521259	
	28	HORIZONTAL VANE COMPLETE	1	ACXE24C04660	
	29	HORIZONTAL VANE COMPLETE	1	ACXE24C04670	
⚠	30	REMOTE CONTROL COMPLETE	1	ACXA75C20670	○
	31	FRONT GRILLE COMPLETE	1	ACXE10C13660	○
	32	INTAKE GRILLE COMPLETE	1	ACXE22K09860	
	33	GRILLE DOOR COMPLETE	1	ACXE14C01440	
	34	PARTICULAR PIECE-COMplete	1	ACXD93C03980	
	35	AIR FILTER	2	ACXD00-02990	○
	36	SCREW - FRONT GRILLE	6	XTT4+16CFJ	
	37	CAP - FRONT GRILLE	3	ACXH52-04000	
	38	DRAIN HOSE	1	ACXH85-00210	
	39	INSTALLATION PLATE	1	ACXH36-00840	
	40	BAG COMPLETE - INSTALLATION SCREW	1	CWH82C1705	
	41	OPERATING INSTRUCTION	1	ACXF55-30281	
	42	OPERATING INSTRUCTION	1	ACXF55-30291	
	43	OPERATING INSTRUCTION	1	ACXF55-30301	
	44	OPERATING INSTRUCTION	1	ACXF55-29741	
	45	OPERATING INSTRUCTION	1	ACXF55-29751	
	46	OPERATING INSTRUCTION	1	ACXF55-29761	
	47	INSTALLATION INSTRUCTION	1	ACXF60-42731	
	48	INSTALLATION INSTRUCTION	1	ACXF60-42741	
	49	INSTALLATION INSTRUCTION	1	ACXF60-42751	
	50	INSTALLATION INSTRUCTION	1	ACXF60-42761	
	51	INSTALLATION INSTRUCTION	1	ACXF60-42771	
	52	INSTALLATION INSTRUCTION	1	ACXF60-42781	
	53	INSTALLATION INSTRUCTION	1	ACXF60-42791	
	54	INSTALLATION INSTRUCTION	1	ACXF60-42801	
	55	INSTALLATION INSTRUCTION	1	ACXF60-42811	

SAFETY	REF. NO.	PART NAME & DESCRIPTION	QTY.	CS-MZ16XKE	REMARK
	56	INSTALLATION INSTRUCTION	1	ACXF60-42821	
	57	INSTALLATION INSTRUCTION	1	ACXF60-42831	
	58	BAG	1	CWG861497	
	59	SHOCK ABSORBER (LEFT)	1	ACXG70-12960	
	60	SHOCK ABSORBER (RIGHT)	1	ACXG70-12970	
	61	C.C.CASE	1	ACXG50-57100	
	62	MODEL LABEL	2	ACXF85-62830	

(NOTE)

- All parts are supplied from PAPAMY, Malaysia (Vendor Code: 00029488).
- "O" marked parts are recommended to be kept in stock.